

# WASHED UP

## Craft Instructions

Monday

### CRAB FOAM HEADBAND

#### Supplies Provided

Foam pieces  
Googly eyes  
Pipe cleaners



#### Instructions

- Measure the headband by wrapping the red foam strip around your child's head.
- Remove the adhesive backing from one of the red foam squares and adhere the red foam square to the back of the headband to secure.
- Adhere each googly eye to a red foam circle.
- Adhere the red foam circle to the end of the red pipe cleaner.
- Adhere a second foam circle to the back of the previous foam circle sandwiching the pipe cleaner stem between the two circles.
- Adhere the ends of each chenille stem to the back of the headband with a red foam square.
- Adhere the crab claws to the foam headband.

*Put on your headband and crab walk around!*

Tuesday

### BEACH SQUISH BAGS



#### Supplies Provided

One quart-sized Ziploc Bags  
Tube of gel  
Beach "toys"  
Sequins

#### Additional Supplies Needed

Tape

#### Instructions

- Add beach "toys" & sequins to the Ziploc bag.
- Add hair gel to bag.
- Zip bag and then tape it shut.

*Squish and discover everything that has washed up!*



# UNDER THE SEA SPONGE PUPPET!

## Supplies Provided

Sponge  
Craft stick  
Googly eyes  
Feathers  
Sequins

## Additional Supplies Needed

Scissors  
Glue  
Marker

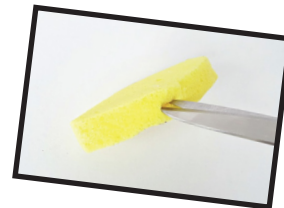
**Instructions** *(For best results, read all the way through before beginning!)*

### Shaping the Fish

- Cut off the corners of the sponge to give the sponge a fish shape.

### Adding the Handle

- Locate the middle of the bottom of the sponge and snip up into the sponge to make an opening.
- Add a dot of glue to the top of the craft stick and insert the craft stick into the opening for a handle.



### Adding the Fins (Feathers)

- Tail Fin
  - In the middle of the back of the sponge, snip with the scissors to make a small opening for the tail fin.
  - Add a small amount of glue to the end of the feathers.
  - Insert the colorful feathers into the opening at the back, spreading them out to form a tail fin.
- Top and Bottom Fins
  - Make smaller but similar openings in the top and bottom.
  - Add a small amount of glue to the end of each feather.
  - Insert a single feather fin in the top and bottom of the sponge, on a slant.
  - Note: You can use a glue gun to secure feathers if preferred, but it may not be necessary.

### Adding the Scales (Sequins)

- Spread glue over the body of the fish and sprinkle with colorful sequins.
- Note: If you want to add sequins to both sides, you may want to let the glue dry a few minutes before turning it over.

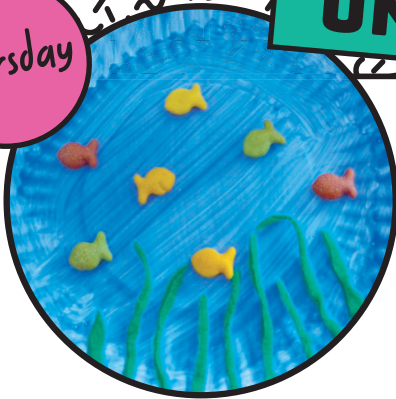
### Creating the Face

- Glue a googly eye to the front of the fish on both sides.
- Draw a mouth on the fish with black marker.

*Your puppet is ready to swim under the sea!*

Thursday

## UNDER THE SEA PAPER PLATE



### Supplies Provided

Paper plate  
Blue paint  
Paint brush  
Goldfish crackers  
Green paper

### Additional Supplies Needed

Scissors  
Glue

### Instructions

- Paint paper plate blue.
- Cut thin strips of green paper.
- Glue the paper onto the bottom of the plate to simulate seaweed.
- Glue on the Goldfish crackers to complete your scene.

*Sit back and enjoy your masterpiece!*

Friday

## SEASHELL TURTLES

### Supplies Provided

Green paper  
Shell  
Googly eyes  
Stencil for turtle  
Green paint  
Paint brush

### Additional Supplies Needed

Glue

### Instructions

- Trace green paper with turtle stencil
- Cut out the turtle shape
- Glue the painted shell to the top of the turtle shape
- Adhere the googly eyes to the "head" of the turtle
- Optional: Decorate shell with leftover scraps of paper to create more texture!



*Use your imagination and have your turtle swim toward the ocean!*